



AW435BT

User Manual

Version 1.1

Last Revised March 17, 2011

**All contents in this manual are copyrighted by ArWest Communications.
All rights reserved. The information contained herein may not be used, accessed, copied,
stored, displayed, sold, modified, published, or distributed, or otherwise reproduced without
express written consent from ArWest Communications.**

TABLE OF CONTENTS

Preface	5
Terms and Conditions	5
Regulatory Information	7
FCC Class A Compliance	7
Canadian Emissions Labeling Requirements	7
WEEE Directive	7
Screen Captures	9
Technical Assistance	9
Return Material Authorization	9
Chapter 1. Introduction	11
1.1. Getting Acquainted	12
1.1.1. LEDs	12
1.1.2. Data and Power Ports	12
1.1.3. External Antenna and Bluetooth Antenna Connectors	13
1.1.4. Mounting Bracket	13
1.1.5. Cables	13
1.1.6. Literature	14
1.1.7. External Antenna (not included)	14
1.1.8. Storage Precautions	14
Chapter 2. Configuration	15
2.1. Powering AW435BT	15
2.1.1. Power supply requirements	15
2.2. Antenna Installation	16
2.3. Installing AWLaunch	18
2.4. Connecting AW435BT and Computer	19
2.4.1. Serial Connection	19
2.4.2. USB Connection	19
2.4.3. Bluetooth® connection	20
2.5. Configuring AW435BT	21
2.5.1. Simplex Protocol	23
2.5.2. Half-Duplex Protocol	26
2.6. Data Port Configuration	27

2.7. Checking Firmware Version	28
2.8. Loading New Firmware	29
2.9. Bluetooth Configuration	30
Chapter 3. Command Line Interface	31
3.1. Command Line Interface Convention.	32
3.1.1. Software Switching to Command Mode	32
3.1.2. Hardware Switching to Command Mode.	33
3.1.3. Switching to Data Mode.	33
3.2. Networking Commands	34
3.2.1. LINK.	34
3.3. Serial Interfacing Commands	35
3.3.1. DPORT	35
3.3.2. MPORT	36
3.4. Special Commands	37
3.4.1. BOOT	37
3.4.2. HELP	37
3.4.3. SAVE	37
3.4.4. SLEEP	38
3.5. Diagnostics and Identification Commands.	38
3.5.1. INFO.	38
3.5.2. STATE	39
Appendix A. Specifications	41
A.1. AW435BT UHF Modem Specifications	41
A.1.1. General Radio Specifications	41
A.1.2. Environmental Specifications	42
A.1.3. Transmitter Specifications	42
A.1.4. Receiver Specifications	43
A.2. Compliance	44
A.3. Connector Specifications	44
Appendix B. UHF Radio Usage	47
Appendix C. Safety Warnings	49
C.1. General Warnings.	49
C.2. Power Supply	50
C.3. Usage Warnings	50
Appendix D. Warranty Terms	51

PREFACE

Thank you for purchasing this product. The materials available in this Manual (the “Manual”) have been prepared by ArWest Communications (“ArWest”) for owners of ArWest Communications products. It is designed to assist owners with the use of the AW435BT and its use is subject to these terms and conditions (the “Terms and Conditions”).

Note: Please read these Terms and Conditions carefully.

Terms and Conditions

COPYRIGHT – All information contained in this Manual is the intellectual property of, and copyrighted material of ArWest Communications. All rights are reserved. You may not use, access, copy, store, display, create derivative works of, sell, modify, publish, distribute, or allow any third party access to, any graphics, content, information or data in this Manual without ArWest Communications’ express written consent and may only use such information for the care and operation of your AW435BT. The information and data in this Manual are a valuable asset of ArWest Communications and are developed by the expenditure of considerable work, time and money, and are the result of original selection, coordination and arrangement by ArWest Communications.

TRADEMARKS – AW435BT™, ArWest Communications® are trademarks or registered trademarks of ArWest Communications. Windows® is a registered trademark of Microsoft Corporation. Bluetooth® word mark is owned by the Bluetooth SIG, Inc. Product and company names mentioned herein may be trademarks of their respective owners.

DISCLAIMER OF WARRANTY – EXCEPT FOR ANY WARRANTIES IN THIS MANUAL OR A WARRANTY CARD ACCOMPANYING THE PRODUCT, THIS MANUAL AND THE AW435BT ARE PROVIDED “AS-IS.” THERE ARE NO OTHER WARRANTIES. ARWEST COMMUNICATIONS DISCLAIMS ANY IMPLIED WARRANTY OF MERCHANTABILITY OR FITNESS FOR ANY PARTICULAR USE OR PURPOSE. ARWEST AND ITS DISTRIBUTORS SHALL NOT BE LIABLE FOR TECHNICAL OR EDITORIAL ERRORS OR OMISSIONS CONTAINED HEREIN; NOR FOR INCIDENTAL OR CONSEQUENTIAL DAMAGES RESULTING FROM THE FURNISHING, PERFORMANCE OR USE OF THIS MATERIAL OR THE AW435BT. SUCH DISCLAIMED DAMAGES INCLUDE BUT ARE NOT LIMITED TO LOSS OF TIME, LOSS OR DESTRUCTION OF DATA, LOSS OF PROFIT, SAVINGS OR REVENUE, OR LOSS OF THE PRODUCT'S USE. IN ADDITION, ARWEST IS NOT RESPONSIBLE OR LIABLE FOR DAMAGES OR COSTS INCURRED IN CONNECTION WITH OBTAINING SUBSTITUTE PRODUCTS OR SOFTWARE, CLAIMS BY OTHERS, INCONVENIENCE, OR ANY OTHER COSTS. IN ANY EVENT, ARWEST SHALL HAVE NO LIABILITY FOR DAMAGES OR OTHERWISE TO YOU OR ANY OTHER PERSON OR ENTITY IN EXCESS OF THE PURCHASE PRICE FOR THE AW435BT.

Preface

Terms and Conditions

LICENSE AGREEMENT – Use of any computer programs or software supplied by ArWest Communications or downloaded from a ArWest website (the “Software”) in connection with the AW435BT constitutes acceptance of these Terms and Conditions in this Manual and an agreement to abide by these Terms and Conditions. The user is granted a personal, non-exclusive, non-transferable license to use such Software under the terms stated herein and in any case only with a single AW435BT or single computer. You may not assign or transfer the Software or this license without the express written consent of ArWest Communications. This license is effective until terminated. You may terminate the license at any time by destroying the Software and Manual. ArWest may terminate the license if you fail to comply with any of the Terms or Conditions. You agree to destroy the Software and manual upon termination of your use of the AW435BT. All ownership, copyright and other intellectual property rights in and to the Software belong to ArWest. If these license terms are not acceptable, return any unused software and manual.

CONFIDENTIALITY – This Manual, its contents and the Software (collectively, the “Confidential Information”) are the confidential and proprietary information of ArWest. You agree to treat ArWest Communications' Confidential Information with a degree of care no less stringent than the degree of care you would use in safeguarding your own most valuable trade secrets. Nothing in this paragraph shall restrict you from disclosing Confidential Information to your employees as may be necessary or appropriate to operate or care for the AW435BT. Such employees must also keep the Confidentiality Information confidential. In the event you become legally compelled to disclose any of the Confidential Information, you shall give ArWest immediate notice so that it may seek a protective order or other appropriate remedy.

WEBSITE; OTHER STATEMENTS – No statement contained at the ArWest website (or any other website) or in any other advertisements or ArWest literature or made by an employee or independent contractor of ArWest modifies these Terms and Conditions (including the Software license, warranty and limitation of liability).

SAFETY – Improper use of the AW435BT can lead to injury to persons or property and/or malfunction of the product. The AW435BT should only be repaired by authorized ArWest warranty service centers. Users should review and heed the safety warnings in Appendix C on page 49.

MISCELLANEOUS – The above Terms and Conditions may be amended, modified, superseded, or canceled, at any time by ArWest. The above Terms and Conditions will be governed by, and construed in accordance with, the laws of the State of California, without reference to conflict of laws.

Regulatory Information

The following sections provide information on this product's compliance with government regulations.

FCC Class A Compliance

This equipment has been tested and found to comply with the limits for a Class A digital device, pursuant to part 15 of the FCC Rules. These limits are designed to provide reasonable protection against harmful interference when the equipment is operated in a commercial environment. This equipment generates, uses, and can radiate radio frequency energy and, if not installed and used in accordance with the instruction manual, may cause harmful interference to radio communications. Operation of this equipment in a residential area is likely to cause harmful interference in which case the user will be required to correct the interference at his own expense.

Note: Any changes or modifications to the equipment not expressly approved by the party responsible for compliance could void your authority to operate such equipment.

Canadian Emissions Labeling Requirements

This Class A digital apparatus meets all requirements of the Canadian Interference-Causing Equipment Regulations.

Cet appareil numérique de la classe A respecte toutes les exigences du Règlement sur le matériel brouilleur du Canada.

The term “IC:” before the equipment certification number only signifies that the Industry Canada technical specifications were met.

WEEE Directive

The following information is for EU-member states only: The use of the symbol indicates that this product may not be treated as household waste. By ensuring this product is disposed of correctly, you will help prevent potential negative consequences for the environment and human health, which could otherwise be caused by inappropriate waste handling of this product. For more detailed information about the take-back and recycling of this product, please contact your supplier where you purchased the product or consult.



Preface

Regulatory Information
WEEE Directive



DECLARATION of CONFORMITY

According to ISO/IEC Guide 22 and EN45014

Manufacturer's Name: JAVAD GNSS, Inc
Manufacturer's Address: 900 ROCK AVENUE
San Jose, CA 95131
USA

declares, that the products

Product Name: HPT435/HPT435BT/AW435/AW435BT UHF RADIO TRANSCEIVER
Product Number: 01-587100-01, 01-587100-02, 01-587100-11, 01-587100-12
Product Options: All

conforms to the following Product Specification:

Safety:
Low Voltage Directive 2006/95/EC EN 60950-1:2006
R&TTE Directive 1999/5/EC EN 300 113 - 1, EN 300 113 - 2
EN 301 489 - 1, EN 301 489 - 5
EMC Directive 2004/108/EC EN 55022, EN 61000 - 4

Supplementary Information:

The product herewith complies with the essential requirements of the directive 1999/5/EC of the European Parliament and of the Council of 9 March 1999 on radio equipment and telecommunications terminal equipment (R&TTE) and the mutual recognition of their conformity and carries the CE marking accordingly

- 1) These products were tested in a typical configuration with JAVAD GNSS, Inc products
- 2) AW435 is identical to HPT435, and AW435BT is identical to HPT435BT, different names are used for marketing purpose

This Declaration of Conformity is based on the following documents:

Doc No	Type of Product	Test Specification	Laboratory / Date of issue
3188749MPK-001	HPT435/AW435	EN 300 113-2	Intertek / Menlo Park 29.10.2009
3188749MPK-001	HPT435/AW435	EN 300 113-1	Intertek / Menlo Park 29.10.2009
3188749MPK-003	HPT435/AW435	EN 301 489-1	Intertek / Menlo Park 31.08.2009
3188749MPK-003	HPT435/AW435	EN 301 489-5	Intertek / Menlo Park 31.08.2009
3188749MPK-002	HPT435/AW435	EN 60950-1:2006	Intertek / Menlo Park 30.11.2009

V. Zhukov

San Jose, January 15, 2010

Vladimir Zhukov, Product Regulations Manager

European contact for regulatory topics only: ALLSAT GmbH Am Hohen Ufer 3A, 30159 Hannover, Germany
USA contact: JAVAD GNSS, Inc. 900 Rock Avenue, San Jose, CA 95131, Phone (408)770-1770

Revision 1.0

Screen Captures

This manual includes sample screen captures. Your actual screen can look slightly different from the sample screen due to the receiver you have connected, operating system used and settings you have specified. This is normal and not a cause for concern.

Technical Assistance

If you have a problem and cannot find the information you need in the product documentation, contact your local dealer. Alternatively, request technical support using the ArWest Communications World Wide Web site at: www.arwestcom.com

Return Material Authorization

Initially, the customer contacts support to report a problem. Please refer to support: support@arwestcom.com. If support determines the problem cannot be resolved over e-mail/internet, it will authorize the return of the unit for repair or replacement, depending on the nature of the problem.

Preface

Return Material Authorization
WEEE Directive

INTRODUCTION

External extra rugged digital high power UHF radio transceiver programmable in frequency ranges from 406 to 470 MHz. It has GMSK, DBPSK, DQPSK, 4FSK, D8PSK, and D16QAM modulations with advanced forward error correction and data scrambling. The output power is programmable from 320 mW to 35 W.



Figure 1-1. AW435BT

It takes incoming data, modulates it with GMSK, FSK, PSK or most spectrum efficient QAM modulation and transmits it at RF power output levels from 25 dBm up to 45 dBm operating in UHF frequency band 406 to 470 MHz.

The UHF transceiver is also capable of receiving RF signals through a 50 Ohm impedance external antenna port.

AW435BT delivers a reliable radio link at up to 38.4 kbps over the air for the 25 kHz channel spacing, 19.2 kbps for 12.5 kHz, and 9.6 kbps for 6.25 kHz.

The unmatched features of AWT435BT include data scrambling, frequency hopping, user selectable transmit output power level, low power consumption sleep modes, autoscanning.

The unit's user settings can be changed through the built-in Command Line interface (CLI), or through AWLaunch. The built-in software tools provide the wireless link testing, unit's status and error statistics monitoring as well as unit's settings change over the air. The firmware of the AW435BT radio transceiver resides in a flash memory. The updating of the radio modem programs is entirely software-based. The flash memory is re-programmable through an RS232 interface, USB, Bluetooth, or over the air.

The AW435BT is a rugged and very powerful external radio transceiver 152 mm wide 84 mm deep 72 mm high, weighs 900 g.

1.1. Getting Acquainted

1.1.1. LEDs

External LED's (see Figure 1-2) are used for Link and Line status indication:

Position	LED Name	Color	Description
1	PWR	Green	Active if Power connected to modem
2	SYNC	Red	Active whenever a signal with a level sufficient for reliable reception exists on the radio channel.
3	TX/RX	Green	Active if modem receives or transmits Data over serial interface
4	ALARM	Red	Active if modem receives or transmits Data over Bluetooth

1.1.2. Data and Power Ports

The AW435BT data and power port are placed on the front of the unit (Figure 1-2).



Figure 1-2. AW435BT front side

Through the data port the AW435BT modem can be connected to RS-232 serial port with Data-Ser Cable, DB9/DB15 (6ft/1.8m), or this port can be configured as RS422/485 and connected to the RS-422 or RS-485 ports. With Data-Ser Cable, ODU-7/DB15 (6ft/1.8m) the modem can be connected to the JAVAD GNSS receiver.

Through the power port the AW435BT can be powered. See “Powering AW435BT” on page 15 for detailed information.

1.1.3. External Antenna and Bluetooth Antenna Connectors

The external antenna connects to the TNC external antenna connector and Bluetooth antenna connects to the SMA connector which are placed on the back panel of AW435BT (Figure 1-3).

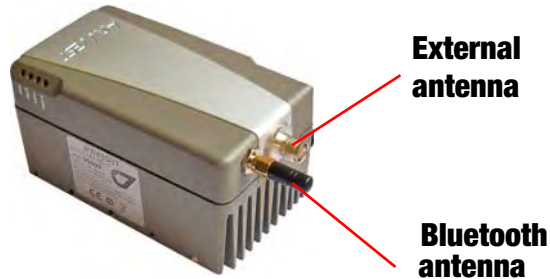


Figure 1-3. External and Bluetooth Antenna Connectors

1.1.4. Mounting Bracket

The mounting bracket connects the modem to a standard pole/adaptor (Figure 1-4).

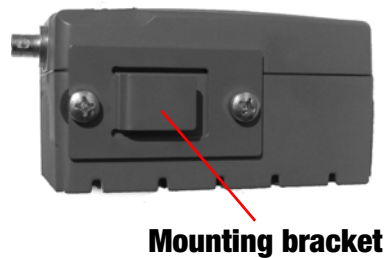




Figure 1-4. Mounting Bracket



1.1.5. Cables

The AW435BT package includes standard communication and power cables for configuring the modem and providing a power source to the modem.

Accessory Cable, AW Data, Open Ended p/n 14-578110-03	
Data-Ser Cable, DB9/DB15 (6ft/1.8m) p/n 14-578110-01	

Introduction

Getting Acquainted
Literature

Power Cable, PL-700/Battery Clips (8.2 ft./2.5m) p/n 14-578111-01	
Accessory Data-Ser Cable, USB/DB15 (1,8m) p/n 14-578-123-0	

1.1.6. Literature

AW435BT literature, including manuals and other product information are available on the ArWest website (<http://www.arwestcom.com>):

- AW435BT Read This First Guide
- *AW435BT Operator's Manual*
- Functional specifications

1.1.7. External Antenna (not included)

Antenna type depends on the site requirements, and may be directional or omni-directional.

1.1.8. Storage Precautions

1. Always clean the instrument after use. Wipe off dust with a cleaning brush, then wipe off dirt with a soft cloth.
2. Store in a location with a temperature of -40° - $+85^{\circ}\text{C}$, and no exposure to direct sunlight.
3. Use a clean cloth, moistened with a neutral detergent or water, to clean the modem. Never use an abrasive cleaner, ether, thinner benzene, or other solvents.

Always make sure the instrument is completely dry before storing. Dry the modem with a soft, clean cloth.

CONFIGURATION

2.1. Powering AW435BT

To power AW435BT use the Battery kit 2 (p/n 99-587100-10).



Figure 2-1. Battery Kit 2

Warning: *Powering AW435BT please observe polarity!*

2.1.1. Power supply requirements

A single external power supply is necessary to operate AW435BT. The external power supply needs to be Listed for US and Certified for EU countries, it needs also to be a Limited Power Source and rated for Outdoor Use and have an output rated for +9...+16V, 10A. This may not be the same range as other ArWest products with which you are familiar.

CAUTION: *To avoid the introduction of hazards when operating and installing, before connecting of the equipment to the supply, make sure that the supply meets local and national safety ordinances and matches the equipment's voltage and current requirements.*

CAUTION: *Never attempt any maintenance or cleaning of the supply while plugged in. Always remove supply from AC power before attempting service or cleaning.*

Warning: *If the voltage supplied is below the minimum specification, the modem will suspend operation. If the voltage supplied is above the maximum specification, the modem may be permanently damaged, voiding your warranty.*

Make sure cords are located so that will not be stepped on, tripped over, or otherwise subjected to damage or stress. Do not operate equipment with a damaged cord or plug – replace immediately. To reduce the risk of damage to the equipment, pull by the plug body rather than the output cord when disconnecting the equipment.

Configuration

Antenna Installation
Power supply requirements

Do not operate the supply if it has received a sharp blow, been dropped, or otherwise damaged. Do not disassemble the supply.

Warning: *Before connecting the external power source and the modem, make sure that the power source matches the modem's voltage and current requirements.*

2.2. Antenna Installation

Warning: *To avoid the equipment serious damage, do not switch the modem to transmit mode if RF antenna is not connected!*

Select the type of antenna that best fits your application and the one that offers the highest dB gain. In addition, setup your system in the highest possible location to minimize obstacles between the transmitting and receiving systems. Always place the antenna on the highest point available. At a minimum, set the antenna to at least ten feet above the terrain using an antenna mast.

Some antennas intended to be attached to the pole mount adaptor (p/n 14-578117-01) are designed to be operated with a ground plane and some without it. Antennas operating without ground plane marked in our catalogue as NGP, e.g. UHF NGP Antenna 1/2, 2.4 dB gain, NMO:

- p/n 30-587307-01 UHF NGP Antenna 406-430 MHz, 1/2, 2.4 dB, NMO
- p/n 30-587308-01 UHF NGP Antenna 430-450 MHz, 1/2, 2.4 dB, NMO
- p/n 30-587309-01 UHF NGP Antenna 450-470 MHz, 1/2, 2.4 dB, NMO

This antennas are NO GROUND PLANE antennas with gain 2.4 dB and NMO specified connector type with should match with your antenna adapter (pole mount or magnet mount). Antennas designed to be operated with ground plane

- p/n 30-587303-01 UHF Antenna 406-430 MHz, 5/8, 5 dB, NMO
- p/n 30-587304-01 UHF Antenna 430-450 MHz, 5/8, 5 dB, NMO
- p/n 30-587305-01 UHF Antenna 450-470 MHz, 5/8, 5 dB, NMO

provide better gain, but to achieve the best performance of your antenna, add a UHF Antenna Ground Plane Disk (p/n 10-587400-01) to the bottom of the antenna for a ground plane. UHF antenna Ground Plane disk improves VSWR and as result increase RF power delivered from transmitter to antenna and system distance range.

To install antenna with ground plane disc (see pictures below):

1. Unscrew the cone-shaped cable part;
2. Place the ground plane disc between cable parts and screw all parts together;
3. Attach cable with ground plane to the UHF antenna;

4. Place the antenna on the pole.



1 Unscrew the cone-shaped cable part



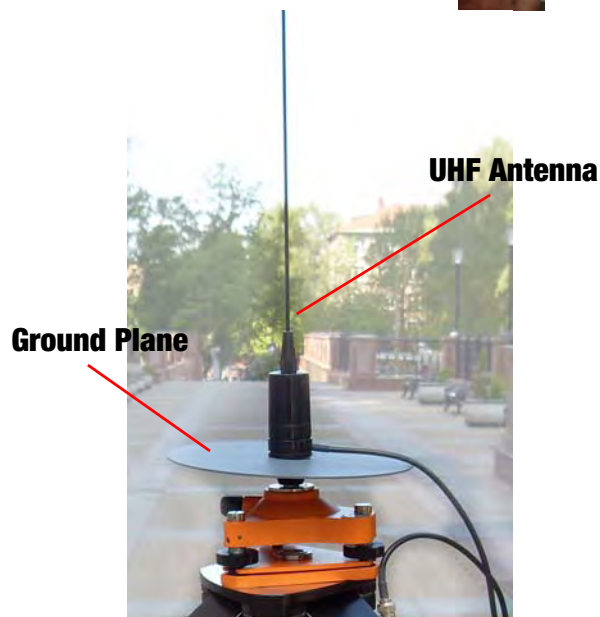
2 Place the Ground Plane between cable parts and screw all together



+



3 Attach to the UHF Antenna



Use coaxial cable and connectors that are impedance-matched with the radio equipment, and make sure to use the shortest length of cable to move the signal between the radio and the antenna, e.g.

- p/n 14-578115-01 Accessory UHF Ant Cable BNC/Magn Mount, 12ft¹
- p/n 14-578116-01 Accessory UHF Ant Cable BNC/Mini-Magn Mount, 12ft¹
- p/n 14-578117-01 Accessory UHF Ant Cable BNC/Pole Mount, 12ft

1. For this type of antenna a metal surface, e.g. car's roof, serves as ground plane.

Configuration

Installing AWLaunch
Power supply requirements

2.3. Installing AWLaunch

AWLaunch™ is a Windows® application for the radio modem configuration. AWLaunch is available from the ArWest Communications website. AWLaunch™ is ArWest Communications's configuration utility for external modems and modems embedded in ArWest Communications modems. AWLaunch provides the following functions:

- Connecting a computer to an UHF modem via a serial port.
- Displaying information about the radio modem installed in the modem.
- Programming the radio modem's settings.
- Loading the new modem firmware.

See the *AWLaunch Software Manual* available on the ArWest Communications website for details on configuring the UHF modem. To configure the AW435BT modem, have the following ready:

- Computer running Windows®;
 - AWLaunch Software installed on the computer;
 - A serial cable.
1. If downloading the program from the website, extract the program files into a folder on your hard drive.
 2. Navigate to the location of the AWLaunch program and double-click the *AWLaunch.msi* icon.
 3. Follow the on-screen installation wizard instructions. Click *Next* to continue, *Back* to get back to previous step, or *Cancel* to quit the installation.
 4. Keep the default installation location or select a new location
 5. Click *Close* to complete the installation and quit wizard. If desired, create a shortcut on the computer's desktop for quick access to AWLaunch.

To uninstall AWLaunch use the *Add and Remove Programs* from the Control Panel.

1. Open the Control Panel, then *Add or Remove Programs* tool.
2. Find *AWLaunch*, and click *Remove*.
3. This will uninstall AWLaunch.

2.4. Connecting AW435BT and Computer

Once you have established a connection between the modem and the computer, you will be able to:

- Configure the modem and its components;
- Send commands to the modem;

Use AWLaunch to load new firmware to the modem.

2.4.1. Serial Connection

To configure, or maintain AW435BT using serial port, it is necessary to connect the modem and a computer using cable Accessory Data-Ser Cable, DB9/DB15 (p/n 14-578110-01)



Figure 2-2. Cable p/n 14-578110-01

1. Connect the serial port of the computer or USB-to-Serial adapter to the serial port of the modem at the switched off power supply by using of a cable.
2. Turn on your computer.
3. Power AW435BT.

2.4.2. USB Connection

Make sure the computer has special USB driver installed (available from www.arwestcom.com) before continuing. To configure, or maintain AW435BT using USB port, you need to connect the modem and a computer using cable Access Data-Ser Cable, USB/DB15 (1,8m) (p/n 14-578123-01).



Figure 2-3. Cable p/n 14-578123-01

1. Download the zip-archive with USB driver from www.arwestcom.com;
2. Extract the archive to the new empty folder;
3. Connect the USB port of the computer to the USB port of the modem at the switched off power supply by using of a cable.

Configuration

Connecting AW435BT and Computer
Bluetooth® connection

4. Turn on your computer.
5. Power AW435BT.
6. Windows will detect USB driver automatically. Otherwise it will ask to specify driver location. Select the folder with extracted file.

2.4.3. Bluetooth® connection

Do not forget to attach the Bluetooth® antenna to Bluetooth® antenna connector on the back panel of the modem.

The AW435BT modem contains Bluetooth® wireless technology that allows synchronization between the modem and any other external device that supports Bluetooth® wireless technology; for example, an IPAQ, or a computer with USB-to-Bluetooth® adapter or PCMCIA-to-Bluetooth® adapter installed, etc.

AW435BT and external device connection procedure varies slightly depending on the type of external device used. In general, the connection procedure is as follows:

Note: Refer to your Bluetooth®-enabled external device documentation for more detailed connection information.

1. Turn on a Bluetooth®-enabled external device and your receiver. The default external device mode is Master; the modem's Bluetooth® module mode is Slave.
2. Instruct the external device (Master) to search for the modem (Slave).
3. Once the Master device detects the modem, use the procedure described in the external device's documentation to connect it with the modem.

2.5. Configuring AW435BT

1. Connect the computer and AW435BT, as described in “Connecting AW435BT and Computer” on page 19.
2. Turn on the AW435BT.
3. Start AWLaunch.

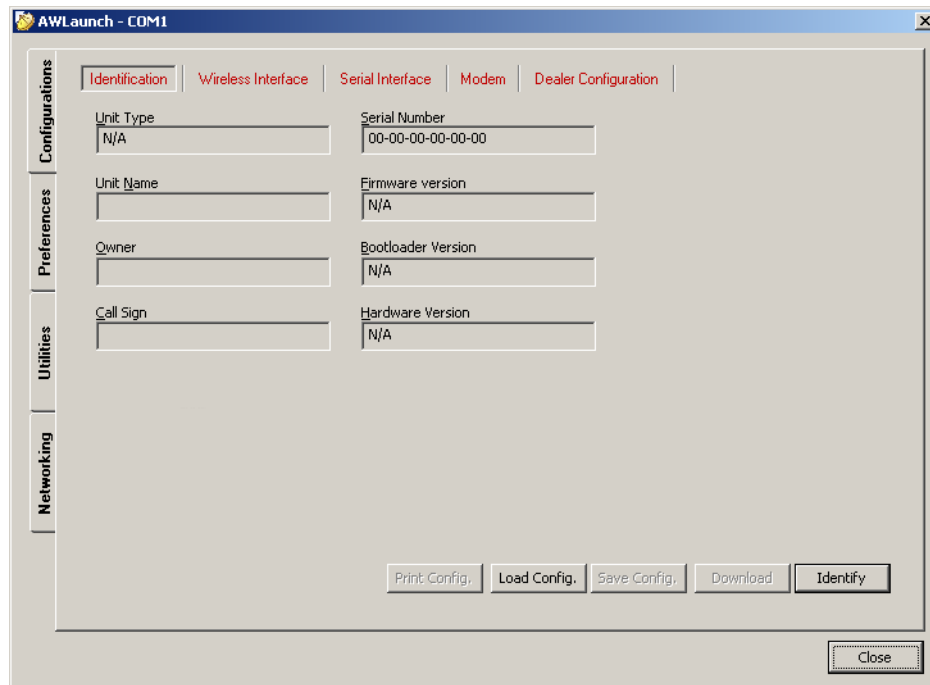


Figure 2-4. Main window

Configuration

Configuring AW435BT
Bluetooth® connection

4. Open the *Preferences* tab and select the port (COM, USB, virtual COM for Bluetooth) the modem is connected to (Figure 2-5), and click *Identify*.

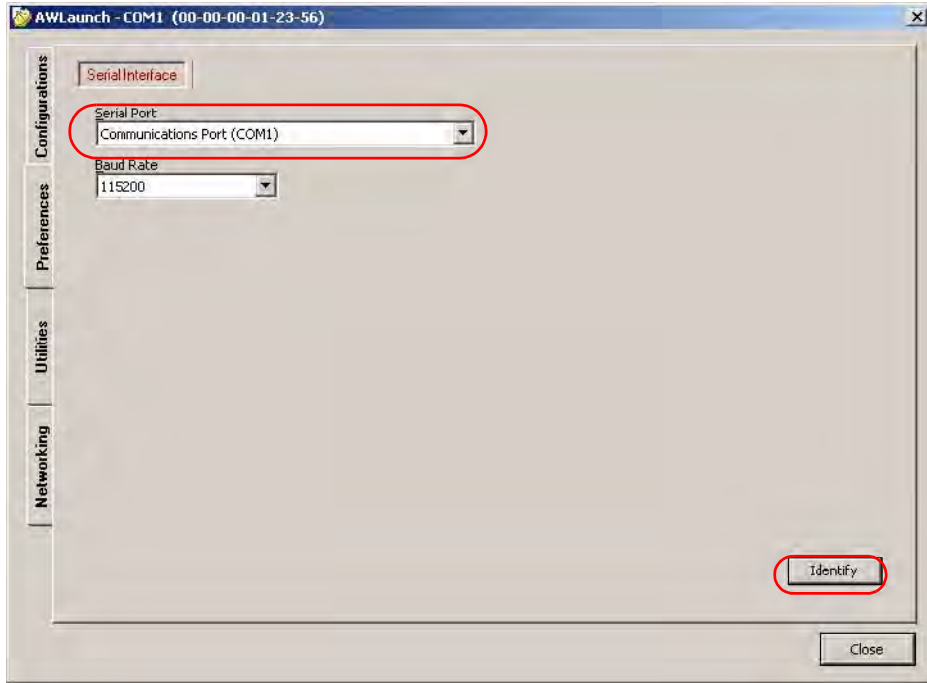


Figure 2-5. Connect to AWLaunch

5. Once the connection is established in the *Configurations* tab *Identification* subtab the unit's information will appear (Figure 2-6), i.e. unit serial number, firmware, hardware and boot loader versions:

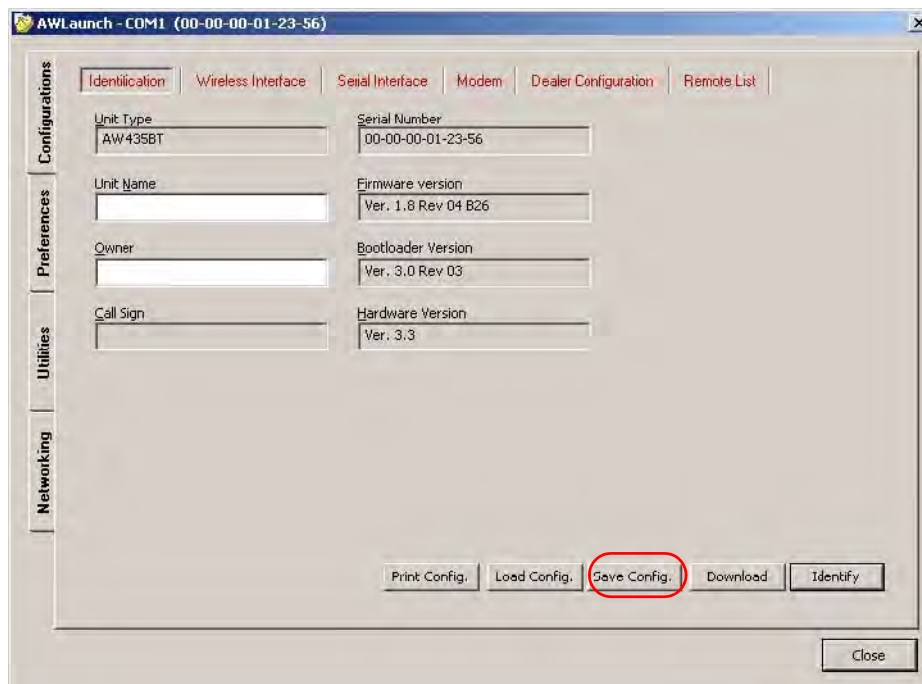


Figure 2-6. Identification tab

- In the *Unit Name* text field the unit's name can be inserted;
 - In the *Owner* field the owner's name can be inserted.
- To save the changes click *Save Config.* button (see Figure 2-6).

2.5.1. Simplex Protocol

When the AW435BT modem is loaded with special firmware which supports Simplex protocol¹, the AWLaunch general window will be like below (Figure 2-7 on page 24).

1. In the *Configurations* tab, *Wireless* subtab, set the following parameters (Table 2-1) and click *Identify*. To save the changes click *Save Config.* button.

1. Simplex protocol is a communications protocol that is purely one-way, and where acknowledgments are not part of any application protocol.

Configuration

Configuring AW435BT
Simplex Protocol

Table 2-1. Modem Parameters

Parameter	Base Modem	Remote Modem	Repeater
Protocol	Base Select from the <i>List</i> Simplex Transmitter, Half Duplex, PCC transmitter if Pacific crest protocol is used, or Satel Transmitter if Satel Protocol is used.	Remote Select from the <i>List</i> Simplex Receiver, Half Duplex Remote, PCC Receiver if Pacific crest protocol is used, or Satel Receiver if Satel Protocol is used.	Remote Select from the <i>List</i> Repeater, if the modem will be used as Repeater, or PCC Repeater, if Pacific crest protocol is used.
Modulation type	Specifies a modulation scheme that will be used by your modem ¹ . DQPSK is recommended.		
Forward Error Correction (FEC)	Enable		
Scrambling	Enable	Enable	
RF power	Select the transmission power for the radio modem in the RF modem slider, or type the value in the edit box		

1. For both Base and Remote modems the modulation type must be the same.

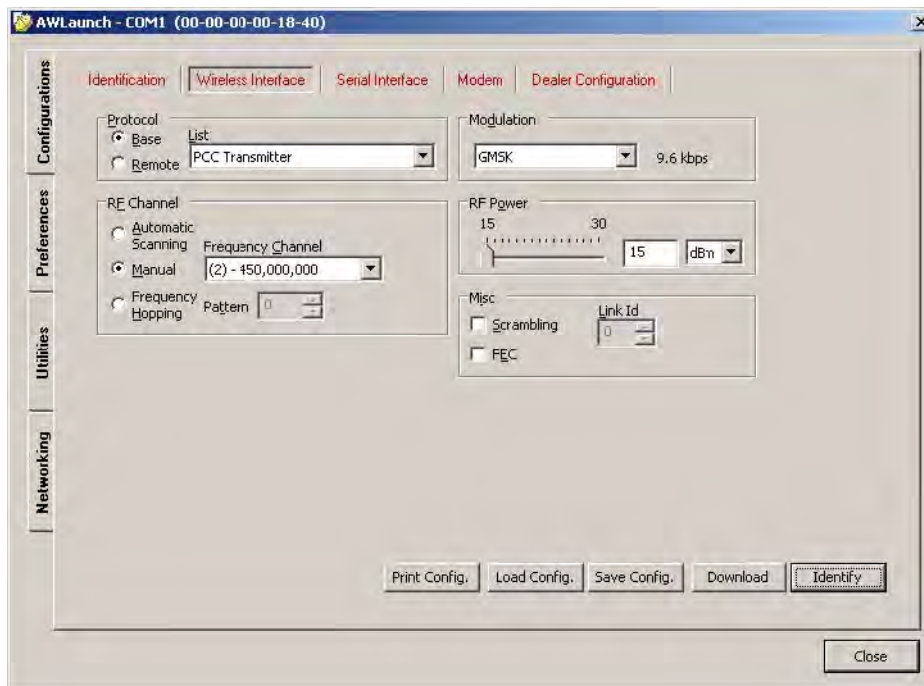


Figure 2-7. Wireless Interface. Simplex protocol

2. In the *Dealer Configuration* subtab set the frequency and channel spacing (Figure 2-8 on page 25). To save the changes click *Save Config.* button.

- Set the frequency in band 406-470 MHz¹.

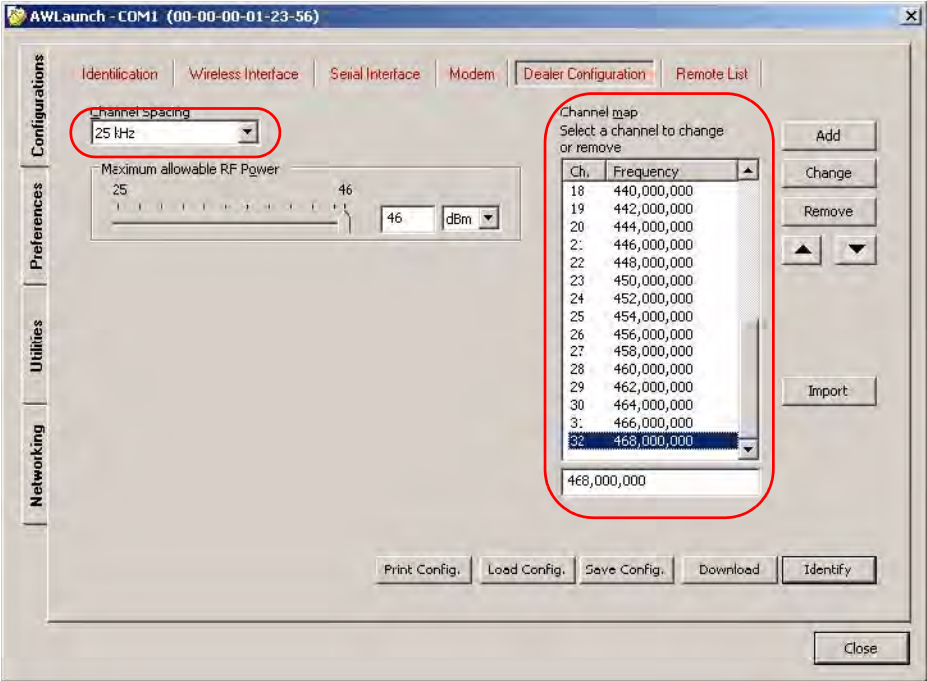


Figure 2-8. Dealer Configuration tab

3. When finished, click *Close*.

1. For both Base and Remote modems the frequency must be the same.

Configuration

Configuring AW435BT
Half-Duplex Protocol

2.5.2. Half-Duplex Protocol

When the AW435BT modem is loaded with special firmware which supports Half-duplex protocol, the AWLaunch general window will be like below:

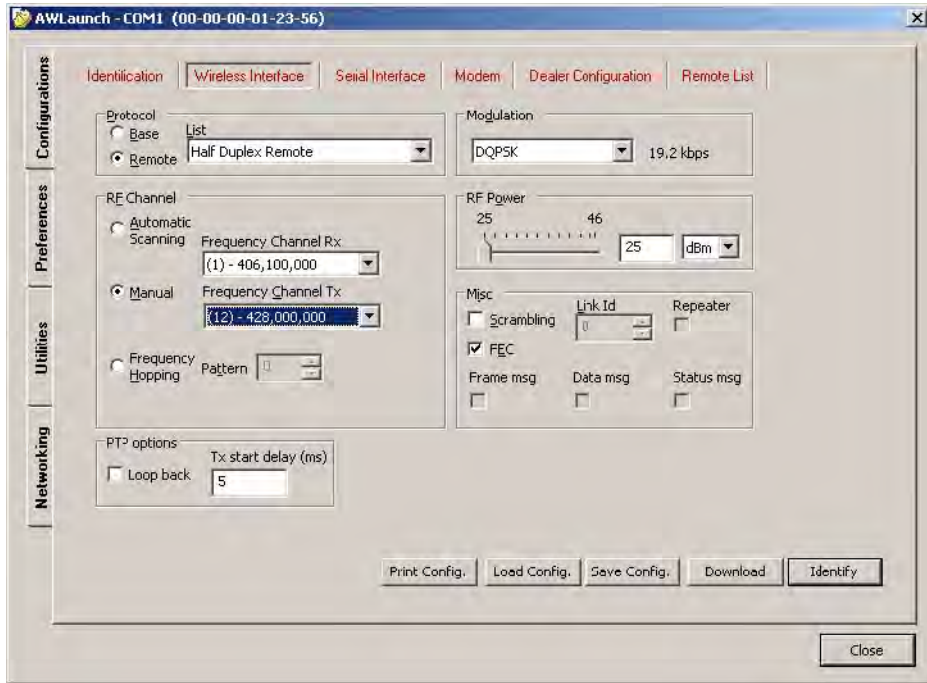


Figure 2-9. Wireless interface. Half-duplex protocol

In the *Configurations* tab, *Wireless* subtab, set the following parameters (Table 2-2) and click *Identify*. To save the changes click *Save Config.* button.

Table 2-2. Modem parameters

Parameter	Mode
Protocol	Half-duplex Base or Half-duplex Remote For Base, Repeater, and Removed modems the protocol type must be the same.
Frequency	Set the frequency in band 406-470 MHz with 6.25 kHz channel spacing ¹ . For both Base and Rover modems the frequency must be the same.
Output power	Select the transmission power for the radio modem.
Modulation type	Specifies a modulation scheme that will be used by your modem. DQPSK is recommended. For both Base and Rover modems the modulation type must be the same.
Link Rate	The link rate is selected automatically
Link Space	For both Base and Remote modems the link space must be the same.
Forward Error Correction	Enable
Scrambling	Enable

1. See detailed description how to select the frequency on page 25.

2.6. Data Port Configuration

Data port can be configured according custom task. Click the *Serial Interface* tab to set the data port parameters:

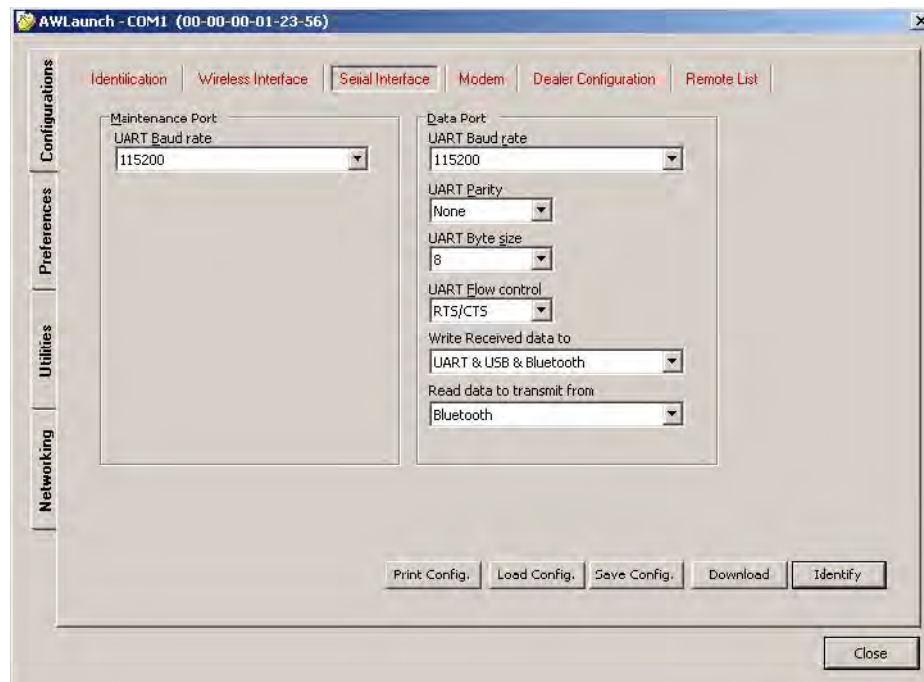


Figure 2-10. Serial Interface tab

To save the changes click *Save Config.* button.

Configuration

Checking Firmware Version
Half-Duplex Protocol

2.7. Checking Firmware Version

Use AWLaunch to check the firmware version of your AW435BT.

1. Select *Identification* subtab of *Configurations* tab;
2. Press *Identify* button (note that you may not press *Identify* button if identification process has been complete successfully once);

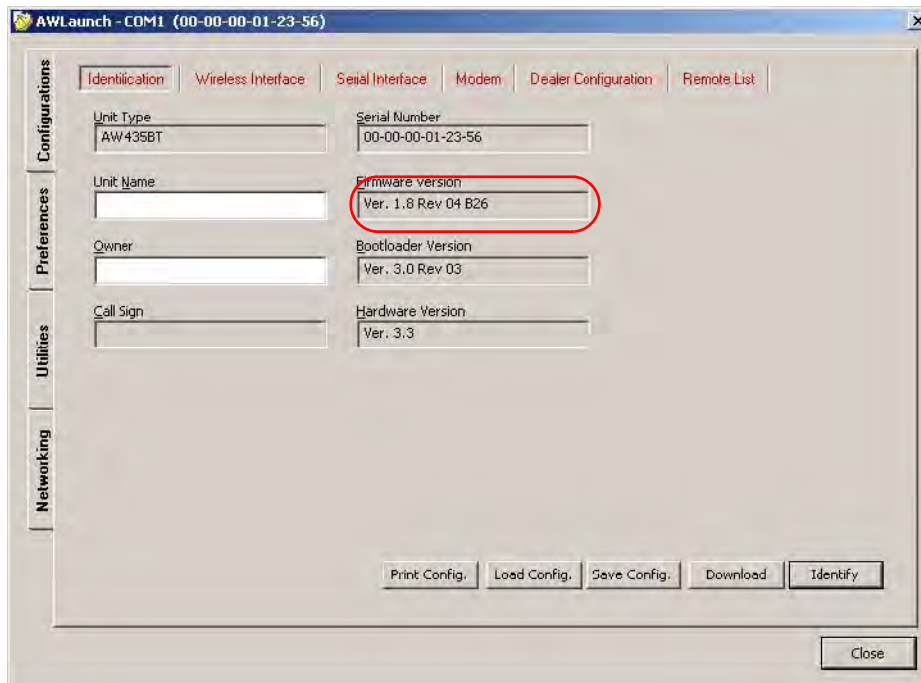


Figure 2-11. Identification subtab

This tab lists important information about the hardware accessories and software properties. This list includes the following, which you will need if you contact ArWest Communications or your dealer:

- Unit Type
 - Unit Name
 - Modem Serial Number
 - Firmware Version
 - BootLoader Version
 - Hardware Version
3. Click *Close* to quit AWLaunch.

2.8. Loading New Firmware

Use the latest firmware version, available for download from the ArWest website www.arwestcom.com, to ensure your modem has the most recent updates.

The modem uses AWLaunch to load firmware onto the modem. For more information, refer to the *AWLaunch Software Manual*, available on the ArWest website. To upgrade the firmware of radio modem the following steps must be performed:

1. Download the new firmware package to your computer.
2. Connect your modem and computer. See “Connecting AW435BT and Computer” on page 19 for this procedure.
3. Select *Download Firmware* subtab of *Utilities* tab;
4. Press *Identify* button (note that you may not press *Identify* button if identification process has been complete successfully once);
5. Press *Browse* button and select the firmware file which you want to download;
6. Press *Download* button (the downloading process may take a few minutes).

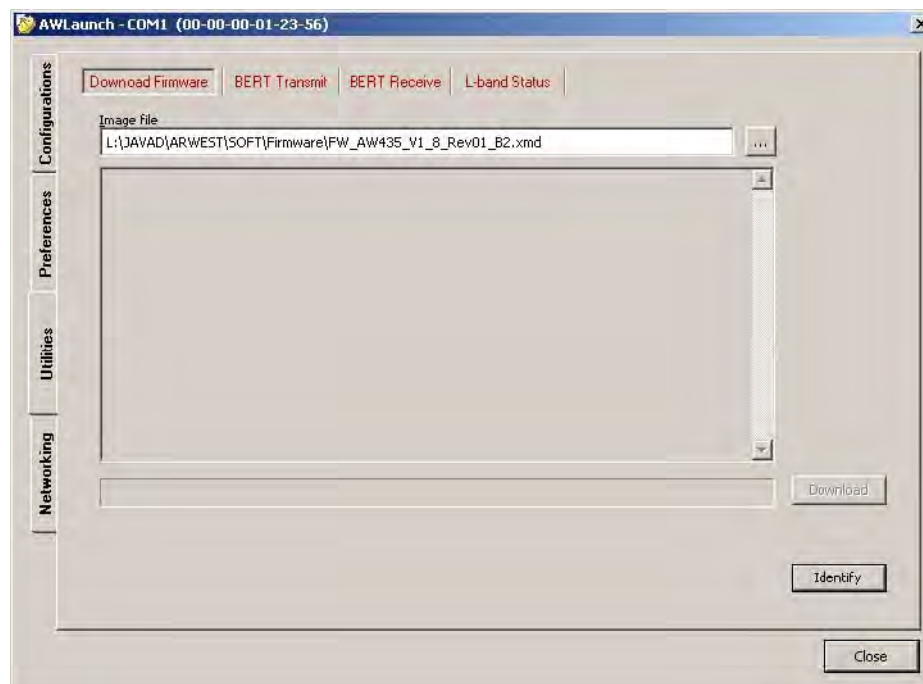


Figure 2-12. Download Firmware

7. Wait until the new firmware version loading will be complete.
8. Click *Close* to quit AWLaunch.

Configuration

Bluetooth Configuration

Half-Duplex Protocol

2.9. Bluetooth Configuration¹

Bluetooth module of AW435BT can be configured. Use the *BT* drop down list to switch on/off the module. The PIN code can be inserted in the *PIN code* field.

To save the changes click *Save Config.* button.

1. Now is supported for Simplex mode only

COMMAND LINE INTERFACE

The built-in user-friendly Command Line Interface (CLI) allows user to perform a full configuration of the unit and read the statistics and alarm status. It is the most powerful tool to configure the unit. It makes changes to all possible settings that system will not be able to determine automatically.

The CLI commands allow user to configure and reconfigure the unit's settings. The user configuration parameters that could be changed through the CLI are:

- Data Port Settings
 - Baud Rate
 - Data Bits (8, 7)
 - Parity (Odd, Even, None)
 - Flow control (None or RTS/CTS)
- Alarm Settings
- Radio Operation Modes
- Sleep modes
 - On/Off
 - Activate by internal real-time clock
 - Activate through RTS/CTS lines
 - Activate by external sense lines
 - Activate by any combination of the parameters mentioned before

Note: The unit's configuration that is set or modified through the CLI will be lost after unit's reboot, unless the saving operation is used to store a new setting in the unit's configuration file.

The CLI commands also provide filing operations, which include:

- Downloading
 - Unit's Configuration files
 - Software Images
- Uploading Unit's Configuration files
- Saving into the configuration files the configuration parameters modified through the CLI.

Command Line Interface

Command Line Interface Convention
Software Switching to Command Mode

3.1. Command Line Interface Convention

The following convention is implemented in AW435BT Command Line Interface (CLI):

- The Carriage Return/Line Feed (CR/LF, 0x0D/0x0A) is a command delimiter.
- The Carriage Return/Line Feed (CR/LF, 0x0D/0x0A) is a reply delimiter followed by the “CLI>” prompt if Echo option is On.
- The Carriage Return/Line Feed (CR/LF, 0x0D/0x0A) is a reply delimiter if Echo option is Off (default option).
- The 2-digit number followed by “@” in the unit's reply indicates the error code (refer to Table 3 for description), if Echo Off is selected, otherwise the error message is displayed.
- A successfully performed command is replied by @00 code, if Echo Off is selected, otherwise the set value is replied.
- A command with the certain [Parameter Name] and blank [Parameter List] displays the current settings for a given parameter.
- To set the mode ordered by CLI commands as permanent User Setting (the setting automatically selected for the boot-up unit) the SAVE command must be asserted.
- A command followed by “/F” option displays the Parameters in the predefined frame format. The display frame format is unique for each command supporting “/F” option.

Table 3-1. Command Line Interface Error Codes

Error Code	Short Description
0x01	Command Syntax Error. A command followed by “/?” displays a command usage.
0x02	The parameter has a format error. A command with the certain [Parameter Name] followed by “/?” displays the format and range of the variable.
0x03	The parameter is out of allowed range. A command with the certain [Parameter Name] followed by “/?” displays the format and range of the variable.
0x04	The command is not valid for specific radio model. To display the list of available commands, the HELP command must be used.
0x05	Unspecified Error

3.1.1. Software Switching to Command Mode

On power-up the radio modem is in data-mode. To switch to command mode the special byte-sequences with special meanings are used:

- Escape-Sequence: “+++” with 20 ms guard time before and after the command characters
- Escape-Acknowledge: “@00<CR><LF>”

20 ms toggling on CTS control line needed to acknowledge switching from Data to Command mode and vice versa.

Happy Flow

1. In data-mode the unit starts looking for the Escape-sequence if there is no data from DTE (Data Terminal Equipment) for more than 20 ms (Start Guard Time).
2. If the unit detects the Escape-Sequence:
 - The transmitter continues sending over the air the data received from DTE before Escape-Sequence and buffers the data from DTE;
 - The Receiver immediately stops forwarding to DTE the data received over the air and buffers it instead.
3. The radio unit waits for 20 ms and then sends Escape-Acknowledge to DTE if there is no data from DTE during 20 ms of Stop Guard Time.
4. The unit goes to command mode and discards Escape-Sequence from input buffer. The modem is immediately ready to receive commands. At the same time it continues buffering the data received over the air since step 2.

Escape-Sequence in Data

During its waiting in step 3, the unit receives data from DTE:

- The unit sends buffered Escape-Sequence from DTE to the air;
- The unit sends all buffered data received from the air since step 2 to DTE and stays in data-mode (i.e. transmits data received from DTE over the air – including the just received, unexpected, data and forwards data received over the air to DTE.)

3.1.2. Hardware Switching to Command Mode

As alternative to Software Switching, the switching through the MP/DP (Data Terminal Ready, DTR) control line can be used. To set Command Mode, the DTE must assert DTR signal active and then passive. By falling edge of DTR signal the unit goes to command mode and then sends Escape-Acknowledge to DTE (“@00<CR><LF>”).

20 ms toggling on CTS control line needed to acknowledge switching from Data to Command mode and vice versa.

Note: The powered up radio modem by default goes to Data Mode regardless of DTR control line polarity.

3.1.3. Switching to Data Mode

- DTE sends the CLI command “DATAMODE<CR><LF>” to the unit.
- Unit answers with Escape-Acknowledge (,@00<CR><LF>) and immediately goes to datamode, so that the DTE can start sending data as soon as the Escape-Acknowledge has been received.
- If no valid CLI commands received from DTE within 1 minute, the unit will automatically switch back to data-mode.

Command Line Interface

Networking Commands

LINK

3.2. Networking Commands

3.2.1. LINK

The LINK command is responsible for configuring radio's operation mode. It has parameters listed below.

Note: In parentheses is shown firmware version, which supports this parameter. If the firmware version is not specified, it means that this parameter is supported in both versions.

LINK [*Parameter Name*] [*Parameters List*] [/?]

Parameter Name	Parameter List
PROT	1 - "Simplex Receiver", a default setting for Remote units (for firmware version 1.8) 2 - "Simplex Transmitter" (for firmware version 1.8) 3 - "Half Duplex" specific for remote units (for firmware 3.0 and newer) 4 - "Half Duplex" specific for base unit (for firmware 3.0 and newer) 5 - Reserved for future use 6 - Reserved for future use 7 - "TRMB Receiver" (used with GMSK modulation, Trimble compatible) (for firmware version 1.8) 8 - "TRMB Transmitter" (used with GMSK modulation, Trimble compatible) (for firmware version 1.8) 9 - "Transparent w/EOT" Repeater (used with GMSK and 4FSK, Pacific Crest compatible) (for firmware version 1.8) 10 - "Repeater" (ArWest Proprietary Simplex) (for firmware version 1.8) 11 - "TRMB Repeater" (used with GMSK modulation, Trimble compatible) (for firmware version 1.8) 12 - "Transparent w/EOT" Receiver (used with GMSK and 4FSK modulation, Pacific Crest compatible) (for firmware version 1.8) 13 - "Transparent w/EOT" Transmitter (used with GMSK and 4FSK modulation, Pacific Crest compatible) (for firmware version 1.8) 14 - "STL Receiver" (used with 4FSK modulation, Satel compatible) (for firmware version 1.8) 15 - "STL Transmitter" (used with 4FSK modulation, Satel compatible) (for firmware version 1.8)
MOD	1 - DBPSK 2 - DQPSK, a default settings 3 - D8PSK 4 - D16QAM 5 - GMSK 6 - 4FSK
SPACE	Sets channel spacing: 0 - 25kHz, a default setting 1 - 12.5kHz 2 - 6.25kHz 3 - 20kHz
PWRB / PWRW	(25 - 46) / (320 - 3500) - RF output Power in dBm / mW
FHOP (only for firmware ver. 1.8)	(0 - 32) - Frequency Hoping Pattern number LINK FHOP command can be processed only if the Channel Map (up to 32 channels)
SCRAM	0 - No Scrambling (a default setting) (1 - 255) - Seed for Pseudo-Random Sequence Generator
FEC	0 - Disable Forward Error Correction (FEC), a default setting 1 - Enable Reed-Solomon encoding

Parameter Name	Parameter List
RTR (only for firmware version 1.8)	Base Unit 0 - No Retransmission in the wireless cluster 1 - There is Repeater Remote Unit 0 - Auto Detect (Base or Repeater) 1 - Receive from Repeater 2 - Receive from Base

Note: The frequency defined by CHAN parameter is not valid if Frequency Hoping mode is selected.

In the Frequency Hoping mode, the Frequency Pattern generator must generate the random numbers smaller than the number of frequencies listed in the unit's frequency list.

3.3. Serial Interfacing Commands

3.3.1. DPORT

The DPORT is an object that responsible for data port interface configurations like Bit Rate, Flow Control, etc.

DPORT [*Parameter Name*] [*Parameters List*] [/?]

Parameter Name	Parameter List
RATE	0 – Maintenance Port baud rate, a default setting 1 – 1200 baud 2 – 2400 baud 3 – 4800 baud 4 – 9600 baud 5 – 14400 baud 6 – 19200 baud 7 – 38400 baud 8 – 57600 baud 9 – 115200 baud, a default setting
BITS	Set number of bits in one byte (8 or 7) 8 is a default setting
PARITY	0 – None, a default setting 1 – Odd 2 – Even
FLOW	0 – None, a default setting 1 – Not used 2 – HW (RTS/CTS)
RS	0 - RS232, a default setting 1 - RS485 2 - RS422 use save, boot commands to activate modification
DATATX	0 - UART, a default setting 1 - USB 2 - BT

Command Line Interface

Serial Interfacing Commands

MPORT

Parameter Name	Parameter List
DATARX	0 - UART, a default setting 1 - USB 2 - BT

The response of command without *Parameter Name* indicates all values:

```
RATE =0  
BITS =8  
PARITY =NONE  
FLOW =NONE  
DTR =0  
RS =RS232  
DATATX =UART  
DATARX =UART, BT
```

3.3.2. MPORT

The MPORT is an object that responsible for maintenance serial port interface configurations such as data rate and number of bits in a byte.

MPORT [*Parameter Name*] [*Parameters List*] [/?]

Parameter Name	Parameter List
RATE	0 – Auto. 1 – 1200 baud 2 – 2400 baud 3 – 4800 baud 4 – 9600 baud 5 – 14400 baud 6 – 19200 baud 7 – 38400 baud 8 – 57600 baud 9 – 115200 baud, a default setting

Note: ArWest radio modem's does not support data flow and parity on the maintenance serial port. The radio modem with none-dedicated maintenance serial port must keep CTS line always active in MPORT mode (DP/MP is low).

3.4. Special Commands

3.4.1. BOOT

The factory software image and default configuration is set for the new unit. The BOOT command is intended to reboot the unit using specified software image and selected configuration.

BOOT IMAGE

BOOT CFG

The BOOT command with no parameters selects the user settings defined by the prior “parameterized” BOOT commands.

3.4.2. HELP

The HELP command types the list of all available commands:

```
HELP- Display this usage
BOOT- Reboot the unit
LINK- Set RF Link Operation Mode
DPORT- Set Data Port Configuration
MPORT- Set Maintenance Port Configuration
ALARM- Alarm Indication and Alarm Control Configuration
SLEEP- Set Sleep Mode Configuration
STATE- Display Status and Statistics
SAVE- Save Current Configuration into Configuration File
INFO- Display Product ID along with Hardware/Software Versions
ATI- Display Product ID along with Hardware/Software Versions
MAP- Operates with Channel Map
DATAMODE- Exit Command Mode
[COMMAND] /?- Display Command Usage
```

3.4.3. SAVE

The SAVE command is intended to store the unit’s currently used configuration into the User Configuration file. The configuration stored in the User Configuration file is activated by automatically after unit’s reboot.

Command Line Interface

Diagnostics and Identification Commands

SLEEP

3.4.4. SLEEP

The SLEEP command determines the sleep mode parameters. The sleeping AW435BT can be activated by real-time CLK, DTR/RTS lines, and command received through TTL inputs. The user can select one, two, or all three conditions.

SLEEP [*Parameter Name*] [*Parameters List*] [/?]

Parameter Name	Parameter List
CLK	0 – Do not activate by internal real-time clock (1 – 255) – Activate by internal real-time clock after 100 to 25500 msec of sleeping
HW	0 – Do not activate through DTR/RTS lines 1 – Activate through DTR/RTS lines
TTL	0 – Do not activate by external sense lines 1 – Activate by external sense lines
GTS	0 – Disable Sleep mode (default) (1 – 255) – Go to sleep mode if there is no activity in 10 to 2550 msec

3.5. Diagnostics and Identification Commands

3.5.1. INFO

The INFO command is used to retrieve the Radio ID along with its Hardware version, the loaded real-time software version/revision and BootLoader's version/revision.

INFO [*Parameter Name*] [*Parameters List*] [/?]

Parameter Name	Parameter List
ID	Product ID: 35 - HPT435BT 43 - AW435BT
SN	Six bytes Serial Number (SN)
HW	1.0 - hardware version in numeric "Major.Minor" format
SW	Ver. 1.0 Rev. A - displays software's version in numeric "Major.Minor" format and revision in numeric format (range from 01 to 99) for engineering releases and alphabetic format (A to Z) for manufacturing releases
BL	Ver. 1.0 Rev. A - displays BootLoader's version in numeric "Major.Minor" format and revision in numeric format (range from 01 to 99) for engineering releases and alphabetic format (A to Z) for manufacturing releases
BT	Bluetooth serial number

The INFO command without *Parameter Name* indicates all values:

```
AW435BT High Power UHF Transceiver, ArWest Communications
Product ID =43
S/N =0000000123BB
Hardware =Ver. 3.3
```

Software =Ver. 1.8 Rev 04 B24
 BootLoader =Ver. 3.0 Rev 03
 BT addr =00:18:D7:00:3C:C7

3.5.2. STATE

The STATE command is used to check the state of the wireless link, the unit in the link, and the alarm control lines. To specify a radio unit (local or remote), the CONNECT command must be used in prior of STATE command using.

STATE [*Parameter Name*] [*Parameters List*] [/?]

Parameter Name	Parameter List
RSSI	-15 to -137 dBm - Indicates the Receive Signal Strength in dBm
BER	0 to 9.9E-3 - Indicates the BER level
FREQ	406.000000 to 470.000000 MHz - Displays the central frequency of the operating channel
TEMP	-30.C to 100.C. Displays the temperate inside of enclosure.
SYNC	0 - if link is not established yet 1 - indicates the link established
MODE	AUTO/FHOP/FIXED
VHPA	VCC V
BT	ON/OFF

The STATE command without *Parameter Name* indicates all values as shown below:

```
RSSI =-141 dBm
BER =0E-0
FREQ =435.000000 MHz
CHAN =-4
TEMP =32
SYNC =0
MODE =FIXED
VHPA =11.75 V
BT =ON
```

Command Line Interface

Diagnostics and Identification Commands

STATE

SPECIFICATIONS

A.1. AW435BT UHF Modem Specifications

The following sections provide specifications for the modem and its internal components.

A.1.1. General Radio Specifications

Table A-1. General Radio Specifications

Parameter	Specification
Operating Frequency Range	406 - 470 MHz (EU) 406.1 - 470 MHz (USA) 406.1 - 430;450-470 MHz (Canada)
Channel Spacing	25/12.5/6.25 kHz (USA, Canada) 25/20/12.5 kHz (EU)
Data Rate (25/20/12.5/6.25 kHz Channel Spacing)	9600/7500/4800/2400 bps – DBPSK/GMSK 19200/15000/9600/4800 bps – DQPSK/4FSK 28800/22500/14400/7200 bps – D8PSK 38400/30000/19200/9600 bps – D16QAM
System Gain for DBPSK modulation (Antenna gain is not included)	161 dB (for 25 kHz Channel Spacing) 163 dB (for 12.5 kHz Channel Spacing) 164 dB (for 6.25 kHz Channel Spacing)
Roaming Speed for DBPSK modulation	75 mph / 120 km/h
Modulation	GMSK/4FSK/DBPSK/DQPSK/D8PSK/D16QAM
Nominal Impedance	50 Ohms
End to End delay	60 ms
Communication Mode	Time Division Duplex (TDD) Time Division Multiple Access (TDMA)
Maximum Distance Range	48 miles / 77 km
Serial port	Serial (RS-232) up to 115200 bps. Serial port configurable as RS-232 and RS-422, or RS-485
USB	USB 2.0 device port (12 Mbps)
Bluetooth	Bluetooth V2.0 Class 2 supporting SPP Slave and Master Profiles
Bluetooth Antenna	External

Specifications

AW435BT UHF Modem Specifications
Environmental Specifications

A.1.2. Environmental Specifications

Table A-2 lists the modem's environmental specifications.

Table A-2. Environmental Specifications

Parameter	Specification
Temperature	Operating -40°C to $+60^{\circ}\text{C}$ Storage -40°C to $+85^{\circ}\text{C}$
Environmental	IP 66
Dimensions (H x W x D)	152 mm x 84 mm x 72 mm
Weight	900 g
Power Supply Voltage	+9... +16VDC nominal
Power Consumption (Average)	120W/38W/300mW – Continuous Transmit/ Transmit with 30% duty cycle/Sleep
Housing/Color	Aluminum / Two-tone ArWest Silver / Gray
UHF Antenna Connector	BNC, 50 Ω
Bluetooth Antenna Connector	SMA, 50 Ω

A.1.3. Transmitter Specifications

Table A-3 lists the transmitter specifications.

Table A-3. Transmitter Specifications

Parameter	Specification
Output Power USA, Canada EU	25 dBm to 45.44 dB m in 1 dB step (320 mW to 35W) 25 dBm to 41.76 dBm in 1 dB step (320 mW to 15W)
Output Power Control Accuracy	± 1.5 dB (at normal test conditions)
Carrier Frequency Stability	± 1.5 ppm initial stability over temp with ± 3.0 ppm aging/year
Max. Frequency Error	± 1.0 kHz (at normal test conditions) ± 1.5 kHz (under extreme test conditions)
Adjacent Channel Power (Conducted) 25/12.5/6.25 kHz CS USA, Canada 25/20/12.5 kHz CS EU	Part §90.210 (C, D, E) Clause 4.2.4 EN 300 113-2 (60 dBc)
Spurious Emission (Conducted)	-36 dBm (9 kHz – 1GHz) -30 dBm (1GHz – 4 GHz)
Spurious Emission (Radiated)	-36 dBm (9 kHz to 1 GHz) -30 dBm (1 GHz to 4 GHz)

A.1.4. Receiver Specifications

Table A-4 lists the receiver specifications.

Table A-4. Receiver Specifications

Parameter	Specification
Noise Figure	3 dB
Receiver Sensitivity (BER 1x10 ⁻⁴ , 25 kHz CS	DBPSK -116 dBm 25kHz / -117 dBm 12.5kHz DQPSK -115 dBm 25kHz / -116 dBm 12.5kHz D8PSK -110 dBm 25kHz / -111 dBm 12.5kHz D16QAM -106 dBm 25kHz / -107 dBm 12.5kHz GMSK -113 dBm 25kHz / -114 dBm 12.5kHz
Dynamic Range	-115 to -15 dBm
Max. Input Signal Level	-10 dBm
Co-channel Rejection	-8 dB for 25 kHz Channel Spacing -12 dB for 12.5 kHz Channel Spacing -16 dB for 6.25 kHz Channel Spacing
Adjacent Channel Selectivity	70 dB for 25 kHz Channel Spacing 60 dB for 12.5 kHz Channel Spacing 50 dB for 6.25 kHz Channel Spacing

Specifications

Compliance

Receiver Specifications

A.2. Compliance

Parameter	Specification
FCC	Part 90
Industry Canada	RSS-119
R&TTE	ETSI EN 300 113-2; ETSI EN 301 489-5; EN 60950-1:2006

A.3. Connector Specifications

Power Connector

Table A-5 gives specifications to power connector type 23-500153-01 CONN, HIGH CURRENT PL-700 RECEPT ALDEN 300906.

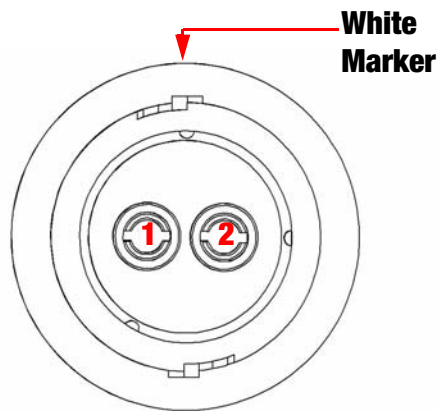


Table A-5. Power Connector Specifications

Number	Signal Name	Dir	Details
1	Power_INP	P	12 volts DC input
2	Power_GND	-	Ground, power return

DB15 Connector

This provides DB15 connectivity for the AW435BT with a DB9 for connection to a PC/CE Device for configuration.

DB15 (Fem)

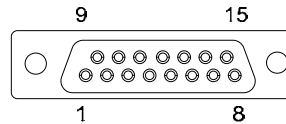


Figure A-1. DB15 Connector

This connector provides DB15 connectivity for the AW435BT with DTE. About using and configuration RS-485 please contact ArWest support.

Table A-6. DB15 Connector Specifications

Number	Signal Name	Dir	Details
1	DCD	O	Data Carrier Detect (RS-232)
2	DSR	O	Data Terminal Ready (RS-232)
3	RTS	I	Receive Data positive line (RS-422)/ Clear to Send (RS-232)
4	DATAIN	I	Receive Data negative line (RS-422)/ Receive Data (RS-232)
5	Reserved		Do not use
6	USB_PWR	I	Power Input line (USB)
7	Ground		Power Ground
8	Reserved		Do not use
9	DTR_IN	I	Data Set Ready (RS-232)
10	TX+/CTS_OUT	O	Transmit Data positive line (RS-422) / Request to Send (RS-232)
11	TX-/TX_OUT	O	Transmit Data negative line (RS-422) / Transmit Data (RS-232)
12	Reserved		Do not use
13	USB_D+		Positive line (USB)
14	USB_D-		Negative line (USB)
15	GND		Signal to Ground

Specifications

Connector Specifications

Receiver Specifications

External Antenna RF Connector

The external antenna connector type is a BNC RF connector AEP Connectors p/n 6501-7051-003.

External Bluetooth Antenna Connector

The external antenna connector type is a SMA connector Linx Technologies, Inc.CONSMSMA015-R178

UHF RADIO USAGE

Many countries require a license for radio users (such as the United States). Be sure you comply with all local laws while operating a UHF radio.

Surveying in RTK mode has made UHF the most popular choice for communications between base and rover receivers. Know the strengths and weaknesses of this technology to get the best use out of your receiver.

The quality and strength of the UHF signals translates into range for UHF communications.

The system's range will greatly depend on the local conditions. Topography, local communications and even meteorological conditions play a major role in the possible range of RTK communications.

If needed, use a scanner to find clear channels for communication.

UHF Radio Usage

SAFETY WARNINGS

- Read these instructions.
- Keep these instructions.
- Heed all warnings.
- Follow all instructions.
- Clean only with a damp cloth.
- Do not block any of the ventilation openings. Install in accordance with the manufacturer's instructions.
- Do not install near any heat sources such as radiators, heat registers, stoves, or other apparatus (including amplifiers) that produce heat.
- Protect the power cord from being walked on or pinched particularly at plugs, convenience receptacles, and the point where they exit from the apparatus.
- Only use attachments/accessories specified by the manufacturer.
- Refer all servicing to qualified service personnel. Servicing is required when the apparatus has been damaged in any way, such as power-supply cord or plug is damaged, liquid has been spilled or objects have fallen into the apparatus, or has been dropped.
- Apparatus shall not be exposed to dripping or splashing and no objects filled with liquids, shall be placed on the apparatus.

C.1. General Warnings

This product should never be used:

- Without the user thoroughly understanding operator's manual.
- After disabling safety systems or altering the product.
- With unauthorized accessories.
- Contrary to applicable laws, rules, and regulations.

DANGER: THE AW435BT SHOULD NEVER BE USED IN DANGEROUS ENVIRONMENTS.

Safety Warnings

Power Supply

C.2. Power Supply

Connect the supplied adapter to the side of the unit in the slot. Plug the two-prong end of the power cord to an AC100-240V outlet. If you have difficulty inserting the plug, turn it over and reinsert it. If the unit will not be used for a long time, disconnect the plug from the outlet.

Note: Before plugging the power cord into an AC outlet, make sure that all the connections have been made.

CAUTION: *To reduce the risk of electric shock, do not perform any servicing other than that contained in the operating instructions unless you are qualified to do so.*

CAUTION: *To avoid the introduction of hazards when operating and installing, before connecting of the equipment to the supply, make sure that the supply meets local and national safety ordinances and matches the equipment's voltage and current requirements.*

CAUTION: *Never attempt any maintenance or cleaning of the supply while plugged in. Always remove supply from AC power before attempting service or cleaning.*

Warning: *If the voltage supplied is below the minimum specification, the adapter will suspend operation. If the voltage supplied is above the maximum specification, the adapter may be permanently damaged, voiding your warranty.*

Make sure cords are located so that will not be stepped on, tripped over, or otherwise subjected to damage or stress. Do not operate equipment with a damaged cord or plug – replace immediately. To reduce the risk of damage to the equipment, pull by the plug body rather than the output cord when disconnecting the equipment.

Do not operate the supply if it has received a sharp blow, been dropped, or otherwise damaged. Do not disassemble the supply.

Warning: *Before connecting the external power source and the adapter, make sure that the power source matches the adapter's voltage and current requirements.*

C.3. Usage Warnings

If this product has been dropped, altered, transported or shipped without proper packaging, or otherwise treated without care, erroneous measurements may occur.

Note: Do not connect or disconnect equipment with wet hands, you are at risk of electric shock if you do!

Inform ArWest immediately if this product does not function properly. Only allow authorized ArWest warranty service centers to service or repair this product.

Warning: *To avoid the equipment serious damage, do not switch the modem to transmit mode if RF antenna is not connected.*

CAUTION: *Never attempt connecting/disconnecting the serial cable while supply is plugged in. Always remove supply from AC power before connecting/disconnecting serial cable.*

WARRANTY TERMS

ArWest Communications Corp., Inc. (“Company”) warrants, to the end-user only, that the Narrow Band Radio Modems (“Radios”) purchased (a) conforms to the Company’s published specifications for the model purchased, and (b) is free from defects in material or workmanship. The duration of this warranty is twelve (12) months¹ from date of purchase and any claim for breach of warranty must be brought to the Company’s attention within such twelve (12) month period and the Receiver must be returned for action on any such claim within twelve (12) months from the date of purchase. Within a reasonable period of time after a claim, the Company will correct any failure of the Radio to conform to specifications or any defect in materials or workmanship, or replace the Radio, or, at its option, provide a full refund of the purchase price. A repaired or replaced product is warranted for 90 days from the date of return shipment to the buyer, or for the balance of the original warranty period, whichever is longer. These remedies are the buyer’s exclusive remedies for breach of warranty.

To obtain warranty service, the buyer must return the Radio, postage-paid, with proof of the date of original purchase and the buyer's return address to the Company or an authorized service center. The Company will not be responsible for any loss or damage to the product incurred while it is in transit or is being shipped for repair. It is the buyer's responsibility to arrange for insurance, if the buyer so desires.

The Company does not warrant (a) any product, components or parts not manufactured by the Company, (b) defects caused by failure to provide a suitable installation environment for the Radio, (c) damage caused by disasters such as fire, flood, wind, and lightning, (e) damage caused by unauthorized attachments or modification, (f) damage during shipment, (g) any other abuse or misuse by the buyer, (h) that the Radio will be free from any claim for infringement of any patent, trademark, copyright or other proprietary right, including trade secrets.

THE FOREGOING WARRANTIES ARE IN LIEU OF ALL OTHER WARRANTIES, EXPRESS OR IMPLIED, INCLUDING BUT NOT LIMITED TO THE IMPLIED WARRANTIES OF MERCHANTABILITY AND FITNESS FOR A PARTICULAR PURPOSE, AND IF APPLICABLE, IMPLIED WARRANTIES UNDER ARTICLE 35 OF THE UNITED NATIONS CONVENTION ON CONTRACTS FOR THE INTERNATIONAL SALE OF GOODS.

IN NO CASE SHALL THE COMPANY BE LIABLE FOR ANY SPECIAL, INCIDENTAL, OR CONSEQUENTIAL DAMAGES ARISING DIRECTLY OR INDIRECTLY OUT OF THE OWNERSHIP, USE OR OPERATION OF THE RADIO REGARDLESS OF WHETHER SUCH DAMAGES ARE PREDICATED OR BASED UPON BREACH OF WARRANTY, BREACH OF CONTRACT, NEGLIGENCE, STRICT TORT, OR ANY OTHER LEGAL THEORY. SUCH DAMAGES INCLUDE, BUT ARE NOT LIMITED TO, LOSS OF PROFITS, LOSS OF SAVINGS OR REVENUE, LOSS OF USE OF THE RADIO OR ANY ASSOCIATED EQUIPMENT, COST OF CAPITAL, COST OF ANY SUBSTITUTE EQUIPMENT, FACILITIES OR SERVICES, THE CLAIMS

1. The warranty against defects in ArWest adapter, antenna, battery, charger, or cable is 90 days.

Warranty Terms

OF THIRD PARTIES, INCLUDING CUSTOMERS AND INJURY TO PROPERTY. THIS LIMITATION DOES NOT APPLY TO CLAIMS FOR PERSONAL INJURY. SOME STATES DO NOT ALLOW LIMITS ON WARRANTIES, OR ON REMEDIES FOR BREACH IN CERTAIN TRANSACTIONS. IN SUCH STATES, THE LIMITS IN THIS PARAGRAPH AND THE PRECEDING PARAGRAPH MAY NOT APPLY.

No employee of the Company, or any other party, is authorized to make any warranty in addition to those made in this document. This warranty allocates the risks of product failure between the Company and the buyer. This allocation is recognized by both parties and is reflected in the price of the goods. The buyer acknowledges that it has read this warranty, understands it, and is bound by its terms. This limited warranty is governed by the laws of the State of California, without reference to its conflict of law provisions or the U.N. Convention on Contracts for the International Sale of Goods.

READER COMMENT FORM

We appreciate your comments and suggestions for improving this publication.

I use the following ArWest product _____
for _____

Please circle a response for each of the statements below:

1 = Strongly Agree 2 = Agree 3 = Neutral 4 = Disagree 5 = Strongly Disagree

The manual is well organized.	1	2	3	4	5
I can find the information I want.	1	2	3	4	5
The information in the manual is accurate.	1	2	3	4	5
I can easily understand the instructions.	1	2	3	4	5
The manual contains enough examples.	1	2	3	4	5
The examples are appropriate and helpful.	1	2	3	4	5
The layout and format are attractive and useful.	1	2	3	4	5
The illustrations are clear and helpful.	1	2	3	4	5
The manual is:	too long just right too short				

Please answer the following questions:

Which sections do you use the most? _____

What do you like best about the manual? _____

What do you like least about the manual? _____

Optional

Name _____

Company _____

Address _____

Telephone _____ Fax _____

Please mail to the ArWest local office listed on the back cover. All comments and suggestions become the property of ArWest Communications.



900 Rock Avenue, San Jose, CA 95131 USA
Tel: + 1(408) 770-1790
Fax: + 1(408) 770-1799
www.arwestcom.com

Copyright © ArWest Communications, 2010
All rights reserved. No unauthorized duplication.