



# ALPHA WAVE NARROWBAND RADIO MODEMS WIRELESS SOLUTIONS

ArWest Communications Corp. 900 Rock Avenue, San Jose, CA 95131  
Tel+1 408 770 17 90 Fax: +1 408 770 17 99 E-mail: sales@arwestcom.com  
© 2010 ArWest Corp. ArWest is a registered trademark of ArWest Corp  
[www.arwestcom.com](http://www.arwestcom.com)

## AW100



For operation manuals and other technical documents please see links below. To update your modem now (and frequently later) please visit our website and download the latest firmware. Here are links to the AW100 firmware, documentation, and utilities:

- **AW100 Newest Firmware Version**

[http://www.arwestcom.com/firmware/FW\\_AW100.zip](http://www.arwestcom.com/firmware/FW_AW100.zip)

- **AW100 User Manual**

[http://www.arwestcom.com/doc/AW100\\_User\\_Manual.pdf](http://www.arwestcom.com/doc/AW100_User_Manual.pdf)

- **AW100 Data Sheet**

[http://www.arwestcom.com/doc/AW100\\_Datasheet.pdf](http://www.arwestcom.com/doc/AW100_Datasheet.pdf)

- **AWLaunch (Modem Configuration Software) free**

<http://www.arwestcom.com/doc/AWLaunch.zip>

- **AWLaunch Software Manual**

[http://www.arwestcom.com/doc/AWLaunch\\_Software\\_Manual.pdf](http://www.arwestcom.com/doc/AWLaunch_Software_Manual.pdf)

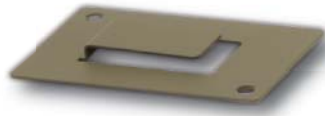
# AW100

## Support Inquiries

The support area of the website [www.arwestcom.com](http://www.arwestcom.com) provides access to frequently asked questions, configuration procedures, manuals, e-mail support, etc. Should you have any problems with AW100, please contact ArWest Customer Support [support@arwestcom.com](mailto:support@arwestcom.com). Generally, you will receive a response within 24 hours or less, depending on the severity of the problem.



Accessory Data-Ser-Pwr Cable,  
DB9/DB15/SAE  
p/n 14-578110-02



Tripod Clip  
p/n 10-587302-21



Extension Cable SAE/SAE  
(6ft/1.8m)  
p/n 14-578102-01

## Read this First